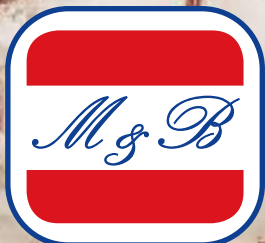


Monti & Barabino

**Technical Supplies
For Industrial and Naval field
Since 1880**



**COUPLINGS AND
CLAMPING SYSTEMS**





Monti & Barabino, established in 1880, is based in Genoa and operates in the field of Technical Items supplies for the Industrial and Maritime Sectors.

The extremely wide experience matured in more than 135 years of activity and its highly qualified personnel composed by technicians, marine engineers, naval architects etc., enables the Company to offer the most complete and efficient technical and commercial assistance.

Moreover, the products stocked in its large warehouse allows it to promptly satisfy any kind of enquiry, while its workshop is able to manufacture all types of packings and gaskets comprising the moulding of rubber and elastomer of various types, including silicon, Fluoropolymer, Polyurethane, etc.

Since February 2004, Monti & Barabino S.p.A. improved its Quality Management System in accordance with **UNI EN ISO 9001** regulations, obtaining the certification through **R.I.N.A.** This prestigious acknowledgement is a confirmation of our constant effort in offering excellent quality and service to all those Customers who have chosen and will choose our Company as their supplier.



Our workshop, acting as  **Parker** Official distributor, is able to offer:

- FLEXIBLE HOSES FOR LOW, MEDIUM AND VERY HIGH PRESSURE
- MED APPROVED FLEXIBLE HOSES
- TYPE APPROVED SHIP TO SHORE AND INDUSTRIAL COMPOSITE HOSES
- HIGH PRESSURE STEAM HOSES
- HIGH PRESSURE CLEANING HOSES
- RUBBER, STAINLESS STEEL AND TEXTILE EXPANSION JOINTS

Moreover:

- HYDRAULIC TEST FACILITIES
- MANAGEMENT OF TESTING PROCEDURES IN PRESENCE OF CLASSIFICATION BODIES
- PRESSED FITTINGS ON LARGE BORE RUBBER HOSES UP TO 10"



MECHANICAL WORKSHOP and **PIPE WORKSHOP** are available for the execution of customized processes on our semi-finished products. Thanks to the wide availability of **WAREHOUSE** we are able to satisfy your needs in a short time, organizing and managing your shipments in a very short time.

We perform CNC turning and cutting on rubber and metal semi-finished products; we mold details and rubber gaskets.



We produce gaskets in any material, even according to Customer's design, including padded copper and spiral wound gaskets.

We sew and assemble insulating mats and textile joints: wide choice of fabrics for high temperatures.



Laser marking of finished products and components

We are an authorized **Parker** assembling center, hydraulic hoses up to 3" and industrial hoses up to 10".

Ask for our **FLEXIBLE HOSES** and **ACCESSORIES CATALOG**



Approved welders able to manufacture special fittings according to Customer's specifications.

We perform internal hydrostatic tests, also in the presence of an external Certifying Body.



FLANGED FITTINGS

According to UNI / ASA / JIS standard or customized

For further information consult the catalog "STAINLESS STEEL FITTINGS AND ADAPTERS" section 3 by **Monti & Barabino**.

FLAT FLANGE ASA 150					
ND	D	d	N° Holes	Ø	Pitch
1/2"	88,9	22,3	4	15,9	60,3
3/4"	98,4	27,4	4	15,9	69,8
1"	107,9	34,5	4	15,9	79,4
1" 1/4	117,5	43,2	4	15,9	88,9
1" 1/2	127,0	49,5	4	15,9	98,4
2"	152,4	62,0	4	19,0	120,6
2" 1/2	177,8	74,7	4	19,0	139,7
3"	190,5	90,7	4	19,0	152,4
3" 1/2	215,9	103,4	8	19,0	177,8
4"	228,6	116,1	8	19,0	190,5
5"	254,0	143,8	8	22,2	215,9
6"	279,4	170,7	8	22,2	241,3
8"	342,9	221,5	8	22,2	298,4
10"	406,4	276,3	12	25,4	361,9

FLAT FLANGE ASA 300					
ND	D	d	N° Holes	Ø	Pitch
1/2"	95,2	22,3	4	15,9	66,7
3/4"	117,5	27,7	4	19,0	82,5
1"	123,8	34,5	4	19,0	88,9
1" 1/4	133,3	43,2	4	19,0	98,4
1" 1/2	155,6	49,5	4	22,2	114,3
2"	165,1	62,0	8	19,0	127,0
2" 1/2	190,5	74,7	8	22,2	149,2
3"	209,5	90,7	8	22,2	168,3
3" 1/2	228,6	103,4	8	22,2	184,1
4"	254,0	116,1	8	22,2	200,0
5"	279,4	143,8	8	22,2	234,9
6"	317,5	170,7	12	22,2	269,9
8"	381,0	221,5	12	25,4	330,2
10"	444,5	276,3	16	28,6	387,3

FLAT FLANGE PN 6					
ND	D	d	N° Holes	Ø	Pitch
15	80	22	4	12	55
20	90	28	4	12	65
25	100	34	4	12	75
32	120	43	4	14	90
40	130	49	4	14	100
50	140	62	4	14	110
65	160	77	4	14	130
80	190	90	4	18	150
100	210	116	4	18	170
125	240	141	8	18	200
150	265	170	8	18	225
175	295	196	8	18	255
200	320	221	8	18	280
250	375	275	12	18	335

FLAT FLANGE PN 10					
ND	D	d	N° Holes	Ø	Pitch
15	95	22	4	14	65
20	105	28	4	14	75
25	115	34	4	14	85
32	140	43	4	18	100
40	150	49	4	18	110
50	165	62	4	18	125
65	185	77	4	18	145
80	200	90	4	18	160
100	220	116	8	18	180
125	250	141	8	18	210
150	285	170	8	22	240
175	315	196	8	22	270
200	340	221	8	22	295
250	395	275	12	22	350

FLAT FLANGE PN 16					
ND	D	d	N° Holes	Ø	Pitch
15	95	22	4	14	65
20	105	28	4	14	75
25	115	34	4	14	85
32	140	43	4	18	100
40	150	49	4	18	110
50	165	62	4	18	125
65	185	77	4	18	145
80	200	90	8	18	160
100	220	116	8	18	180
125	250	141	8	18	210
150	285	170	8	22	240
175	315	196	8	22	270
200	340	221	12	22	295
250	405	275	12	25	355

QUICK RELEASE COUPLINGS



Generality

Recommended for all those applications where the leakage of oil or an other fluid may be dangerous for the safety of the workers and in every field where is necessary to avoid the risk of environment pollution. For safety reasons the accidental disconnection under pressure is not allowed.

Features

Shut off system by means of poppet for standard applications or flat valve where no leakage and low pressure drops are required. More series available on request. Ball bearing or screw-on latching system.

MATERIALS		Carbon Steel, Stainless Steel AISI 316, Brass
SIZES		from 1/4" to 2"
PRESSURE		Standard version up to a 60 Mpa, special series for very high pressure.
GASKET	NBR	Suitable for petroleum derivates, neutral or slightly acidic salt solutions, alcohols, ethers, glycols, fats, oils and greases. Temperatures from -20° to 100° C.
	FKM	Recommended for aromatic products, hydrocarbons, liquid chlorine, carbon disulfide and molten sulphur. Not compatible with esters of the ketone family. Service temperature up to + 180° C.
	FFKM	Heavy duty applications, in presence of aggressive chemicals and very high temperatures.

CAM LOCK® QUICK CONNECTIONS

Generality

Cam Lock quick couplings have been studied to obtain a quick and safe connection between two lines: it is sufficient to insert the male adaptor into the female coupler until the bottom gasket is in contact with the edge of the adaptor. Pressing the cam levers down the coupling will be blocked.

Technical features

The ends of Cam Lock quick coupling can be independently supplied threaded, flanged, for welding or to fitted in rubber hoses.

Usually threads and flanges are in compliance with the Italian and international standards, but special execution can be effected to meet the particular needs of the customer.

MATERIAL		Aluminium, bronze, carbon steel, polypropylene stainless steel (AISI 304 - 316 - 316 L - Hastelloy - Monel - Inconel).
SIZE		1/2 up to 8"
THREADING		ASA, UNI, WITHWORTH, BRIGGS, NTP, NPS
PRESSURE		Up to 2":40 kg/cm and vacuum
		3"/4":20 kg/cm and vacuum
		5"/6":14 kg/cm and vacuum
		8":10 kg/cm and vacuum
GASKETS	BUNA	Suitable for petroleum derivatives, neutral or slightly acidic salt solutions, alcohols, ethers, glycols, fats, oils and greases. Temperatures from -40° to 120° C.
	DUTRAL	Recommended for alkaline and acid solution and aldehydes such as formaldehyde. Steam resistant up to a maximum temperature of 150° C.
	VITON	Recommended for aromatic products, hydrocarbons, liquid chlorine, carbon disulfide and molten sulphur. Viton is not compatible with esters of the ketone family. Service temperature up to + 204° C.
	PTFE	Suitable to be used with acids, solvents and steam up to 260°C. A Viton, Silicon, Neoprene, Hypalon core is also available.

FIG A | Male, BSP female threaded

Size	BSP	Øe	Mat.
1/2"	1/2"	24	Brass / Alum / SS
3/4"	3/4"	32	
1"	1"	37	
1"1/4	1"1/4	45	
1"1/2	1"1/2	54	
2"	2"	63	
2"1/2	2"1/2	76	
3"	3"	91,5	
4"	4"	119	



FIG B | Female, BSP male threaded

Size	BSP	Øi	Mat.
1/2"	1/2"	25	Brass / Alum / SS
3/4"	3/4"	32,5	
1"	1"	37,5	
1"1/4	1"1/4	45	
1"1/2	1"1/2	55	
2"	2"	64	
2"1/2	2"1/2	77,5	
3"	3"	93	
4"	4"	121	



FIG C | Female hose liner

Size	Hose	Øi	Mat.
1/2"	16	25	Brass / Alum / SS
3/4"	21	32,5	
1"	26	37,5	
1"1/4	34	45	
1"1/2	42	55	
2"	52	64	
2"1/2	68	77,5	
3"	80	93	
4"	100	121	



← - CAM LOCK® QUICK CONNECTIONS -

FIG D | Female, BSP female threaded

Size	BSP	Øi	Mat.
1/2"	1/2"	25	Brass / Alum / SS
3/4"	3/4"	32,5	
1"	1"	37,5	
1"1/4	1"1/4	45	
1"1/2	1"1/2	55	
2"	2"	64	
2"1/2	2"1/2	77,5	
3"	3"	93	
4"	4"	121	



FIG E | Male hose liner

Size	Hose	Øe	Mat.
1/2"	16	24	Brass / Alum / SS
3/4"	21	32	
1"	26	37	
1"1/4	34	45	
1"1/2	42	54	
2"	52	63	
2"1/2	68	76	
3"	80	91,5	
4"	103	119	



FIG F | Male, BSP male threaded

Size	BSP	Øe	Mat.
1/2"	1/2"	24	Brass / Alum / SS
3/4"	3/4"	32	
1"	1"	37	
1"1/4	1"1/4	45	
1"1/2	1"1/2	54	
2"	2"	63	
2"1/2	2"1/2	76	
3"	3"	91,5	
4"	4"	119	



FIG L | Female plug

Size	Øi	Mat.
1/2"	25	Brass / Alum / SS
3/4"	32,5	
1"	37,5	
1"1/4	45	
1"1/2	55	
2"	64	
2"1/2	77,5	
3"	93	
4"	121	



FIG P | Male plug

Size	Mat.
1/2"	Brass / Alum / SS
3/4"	
1"	
1"1/4	
1"1/2	
2"	
2"1/2	
3"	
4"	



FIG P | Male plug



FIG LAS / Flanged Male



Gasket

Size	Øi	Øe	Tk	Mat.
1/2"	26	17	4	Buna / Viton / FEP
3/4"	35	22	5,5	
1"	40	27	6,4	
1"1/4	50	35		
1"1/2	56	41		
2"	67	51		
2"1/2	80	60		
3"	96	76		
4"	124	102		
6"	180	152		



DRY DISCONNECT COUPLINGS

Generality



Special fittings for rapid and dry connection of pipes, expressly designed to meet the most demanding requirements in the field of fluid handling. Equipped with piston valves for flow interception, they ensure a quick, safe, leak-free coupling.

Available in a wide range of materials from 3/4 "up to 6", they are used for industrial and naval applications where a safe coupling is required to convey the most aggressive or valuable products.



Advantages

The express coupling and the valve sealing system result in considerable time savings and no product loss.

They are **SAFE** and **ECOLOGICAL**: the flow is interrupted if the joints are not perfectly coupled, avoiding accidental spillage of product.



Features

- Working Pressure **10 Bar** (safety factor 5:1)
- Working Temperature from **-40° up to +200° C** (depending on the material)
- Threaded or flanged version
- High efficiency.
- Sturdy and reliable structure
- Available in Bronze, Aluminium or Stainless Steel 316.
- Gaskets available in Teflon®, Viton®, EPDM, HNBR, Karlez®, Chemraz® or PUR.
- Perfect sealing of the valves during the opening and closing of the joint.
- Fast connection and disconnection even in the presence of pressure and flow.
- It is possible to “customize” the connection to exclude accidental connections between different product lines.

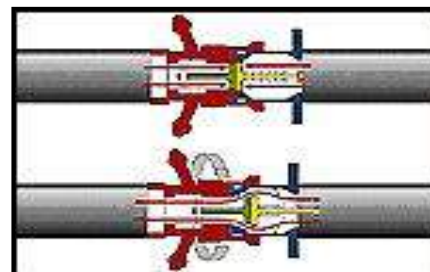


Functioning

With a clockwise rotation of 15° the two parts are joined together. In this position the valves remain closed and the coupling can be opened only when a further rotation of 90° is achieved. To interrupt the flow, the operation is repeated in the opposite sequence.

Compatibility'

According to NATO STANAG 3756, interchangeable with the versions Mann Tek, Emco, Avery Hardoll e Todo. Standard threadings in accordance to DIN/ISO 228 (NPT upon request).



QUICK COUPLINGS

1608 | Male coupling, female threaded

Size	Thread	Øe	Mat.
1" 1/2" R	1"1/2	62	Brass
2R	1"1/2	78	
2R	2"		
3R	2"	108	
3R	2"1/2		
3R	3"		
4R	2"1/2	132	
4R	3"		
4R	4"		
4R	Cassoni		



1642 | Lever female quick coupling

Size	Hose size	Øi	Mat.
3R	40	101	Brass
3R	45		
3R	50		
3R	60		
3R	63		
3R	70		
3R	75		
3R	80		
3R	100		
4R	80	124	
4R	100		



1695 | Flaps female quick coupling

Size	Hose size	Øi	Mat.
2R	40	73	Brass
2R	40		
2R	50		
2R	60	101	
3R	40		
3R	45		
3R	50		
3R	60		
3R	63		
3R	70		
3R	75		
3R	80		
3R	100	124	
4R	80		
4R	100		



1609 | Female plug

Size	Mat.
1" 1/2 R	Aluminium / Brass
2R	



1643 | Male quick coupling

Size	Hose size	Øi	Mat.
3R	40	108	Brass
3R	45		
3R	50		
3R	60		
3R	63		
3R	70		
3R	75		
3R	80		
3R	100		
4R	80	132	
4R	100		



1644 | Double male quick coupling

Size		Mat.
3R	3R	Brass
3R	4R	
4R	4R	
Size		Mat.
1" 1/2 R	1"1/2R	Brass
2R	2R	
3R	3R	
3R	4R	
4R	4R	



1646 | Male / female adapter

Female	Male	Mat.
1" 1/2 R	1" 1/2	Brass
2R	1" 1/2	
2R	2"	
3R	1" 1/2	
3R	2"	
3R	2" 1/2	
3R	3"	
3R	4"	



1646 | Flaps Male / female adapter

Female	Male	Mat.
1"1/2R	1"1/2	Brass
2R	1"1/2	



← - QUICK COUPLINGS -

1648 | BSP male / quick male adapter

Fast Size	Male	Mat.
1" 1/2 R	1" 1/2	Brass
1" 1/2 R	2"	
2R	1" 1/2	
2R	2"	
3R	1" 1/2	
3R	2"	
3R	2" 1/2	
3R	3"	
4R	2" 1/2	
4R	3"	
4R	4"	



1649 | BSP female / quick male adapter

Fast Size	Female	Mat.
1"1/2R	1"1/2	Brass
1"1/2R	2"	
2R	1"1/2	
2R	2"	
2R	3"	
3R	2"1/2	
3R	3"	
3R	3"1/4	
3R	4"	
3R	Cassoni	
4R	2"1/2	
4R	3"	



1694 | Male / female quick adapter

Female	Male	Mat.
1"1/2	2"	Brass
2"	1"1/2	
3"	2"	
3"	4"	
4"	3"	



1694/1 | Flap male / female quick adapter

Fast F	Fast M	Mat.
1"1/2	2"	Brass
2"	1"1/2	

1812 | Quick male plug

Fast Size	Mat.
1"1/2R	Brass
2R	
3R	Al
4R	



1857 | Quick female / BSP female adapter

Fast Size	Female	Mat.
1"1/2R	1"1/2	Brass
2R	2"	
2R	2"	
3R	1"1/2	
3R	2"	
3R	2"1/2	
3R	3"	
4R	2"1/2	
4R	3"	
4R	4"	



3008 | Gasket

Size	Øi	Øe	tk	Mat.
1"1/2R	38	47	3	BunaN / Viton / PTFE
2R	50	66		
3R	74	86	4	
4R	90	108		



THREADED COUPLINGS

1650 | Male + female BSP couplings

Size	Hose	Mat.
1"1/2	40	Brass / SS304
2"	40	
2"	45	
2"	50	
2"1/2	50	
2"1/2	60	
2"1/2	63	
3"	75	
3"	80	
4"	75	
4"	80	
4"	100	
Cassoni	80	
Cassoni	100	



1653 | Female ring BSP

Size	Mat.
1"1/2	Brass / SS304
2"	
2"1/2	
3"	
4"	
Cassoni	



1651 | Swivel female BSP

Size	Hose	Øi	Mat.
1"1/2	40	44,85	Brass / SS304
2"	40	56,66	
2"	45		
2"	50		
2"1/2	40	72,23	
2"1/2	45		
2"1/2	50		
2"1/2	60		
2"1/2	63		
3"	75	84,93	
3"	80		
4"	75	110,07	
4"	80		
4"	100		
Cassoni	80	108	
Cassoni	100		



1833 | Swivel female / threaded male BSP

Female size	Male size	Mat.
2"	1"1/2	Brass / SS304
2"	2"	
2"1/2	1"1/2	
2"1/2	2"	
2"1/2	2"1/2	



1654 | Threaded male BSP

Size	Hose	Øe thread	Mat.
1/2"	15	20,96	Brass / SS304
3/4"	20	26,44	
1"	25	33,25	
1"1/4	32	41,91	
1"1/2	40	47,8	
2"	40	59,61	
2"	45		
2"	50		
2"1/2	40	75,18	
2"1/2	45		
2"1/2	50		
2"1/2	60		
2"1/2	63		
3"	75	87,88	
3"	80		
4"	75	113,03	
4"	80		
4"	100		
4" CASS.	100	113	



1655 | Male / fixed female adapter BSP

Female	Male	Mat.
1"1/2	1"1/2	Brass / SS304
1"1/2	2"	
2"	1"1/2	
2"	2"	
2"	2"1/2	
2"1/2	2"1/2	
2"1/2	4"	
2"1/2	Cassoni	
3"	2"1/2	
3"	3"	
3"	4"	
3"	Cassoni	
4"	4"	
4"	Cassoni	
DIN60	1"1/2	
DIN60	2"	



← - THREADED COUPLINGS -

1656 | Male / swivel female adapter BSP

Female	Male	Mat.
2"1/2	2"	Brass / SS304
2"1/2	2"1/2	
2"1/2	3"	
3"	2"	
3"	2"1/2	
3"	3"	
4"	2"	
4"	2"1/2	
4"	3"	
4"	4"	
Cassoni	2"	
Cassoni	2"1/2	
Cassoni	3"	
Cassoni	4"	



1657 | Male / male adapter

Male	Male	Mat.
3/4"	1"	Brass / SS304
1"	1"1/2	
1"1/2	2"	
1"1/2	2"1/2	
2"	2"1/2	
2"1/2	4"	
2"1/2	Cassoni	
3"	2"	
3"	2"1/2	
3"	4"	
3"	Cassoni	



1658 | Double male adapter

Size	Mat.
3/4"	Brass /SS304
1"	
1"1/2	
2"	
2"1/2	
3"	
4"Gas	
Cassoni	



1659 | Double swivel female

Size	Mat.
3/4"	Brass SS304
1"	
1"1/2	
2"	
2"1/2	
3"	
4"Gas	
Cassoni	



1661 | Male plug BSP

Size	Mat.
3/4"	Brass / SS304 / Alum.
1"	
1"1/2	
2"	
2"1/2	
3"	
4"Gas	
Cassoni	



1662 | Female plug BSP

Size	Mat.
3/4"	Brass / SS304
1"	
1"1/2	
2"	
2"1/2	
3"	
4"Gas	
Cassoni	



AFNOR FRENCH COUPLINGS - GUILLEMIN

Symmetrical half coupling female threaded

Size	BSP	Int. Distance	Mat.
1"1/2	1"1/2	55	Brass / Alum / SS
2	2	69	
2"1/2	2"1/2	84	
3"	3"	103	
4"	4"	123	



Plug

Size	Mat.
1 1/2"	Brass / Alum / SS
2	
2"1/2	
3"	
4"	



Symmetrical half coupling male threaded

Size	BSP	Int. Distance	Mat.
1 1/2"	1"1/2	55	Brass / Alum / SS
2	2	69	
2"1/2	2"1/2	84	
3"	3"	103	
4"	4"	123	



Hose liner

Size	Hose	Int. Distance	Mat.
1 1/2"	40	55	Brass / Alum / SS
2	50	69	
2"1/2	65	84	
3"	75	103	
4"	100	123	



Gasket

DN	Mat.
1 1/2"	Buna / Viton / PTFE
2	
2"1/2	
3"	
4"	



STORZ COUPLINGS

Symmetrical half coupling female threaded

ND	BSP	Mat.
25	1"	Brass / Alum / SS
32	1"1/4	
38	1"1/2	
52	1"1/2	
52	2"	
65	2"1/2	
75	3"	
100	4"	
110	4"	
150	6"	



Symmetrical half coupling male threaded

ND	BSP	Mat.
25	1"	Brass / Alum / SS
32	1"1/4	
38	1"1/2	
52	1"1/2	
52	2"	
65	2"1/2	
75	3"	
100	4"	
110	4"	
150	6"	



Hose liner

ND	Hose	Int. Distance	Mat.
25	25	31	Brass / Alum / SS
32	32	44	
38	38	52	
52	45	66	
52	52	66	
65	65	81	
75	75	89	
100	100	115	
110	100	133	
150	150	160	



← - STORZ COUPLINGS -

Plug

ND	Mat.
25	Brass / Alum / SS
32	
38	
52	
52	
65	
75	
100	
110	
150	



Gasket

ND	Mat.
25	NBR / Viton / PTFE / Silicone
32	
38	
52	
52	
65	
75	
100	
110	
150	



GERMAN COUPLINGS - DIN 28450

Male plug

Size	Mat.
2"	Brass / Alum / SS
3"	
4"	



Female plug

Size	Mat.
2"	Brass / Alum / SS
3"	
4"	



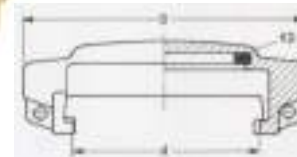
Gasket

Size	Mat.
2"	NBR / Viton / PTFE
3"	
4"	



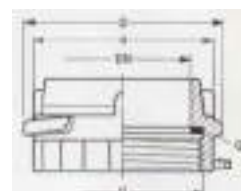
Female hose liner

Size	Hose	Mat.	d	D
2"	50	Brass / Alum / SS	70	105
3"	75		102	145
3"	80		128	175
4"	100			



Male hose liner

Size	Hose	Mat.	d	D
2"	50	Brass / Alum / SS	67	77
3"	75		101	110
3"	80		125	140
4"	100			



← - GERMAN COUPLINGS - DIN 28450 -

Male, female threaded

Size	BSP	Mat.
2"	1"1/2	Brass / Alum / SS
2"	2"	
3"	2"1/2	
3"	3"	
4"	4"	



Female, female threaded

Size	BSP	Mat.
2"	2"	Brass / Alum / SS
3"	3"	
4"	4"	



FIREFIGHTING UNI COUPLINGS

Male hose liner

UNI	Øe thread	Mat.
25	34	Brass
45	56	
70	85	
80	95	
100	115	
125	140	
150	165	



Female hose liner

UNI	Øi nut	Mat.
25	30,5	Brass
45	51,5	
70	79	
80	90	
100	109	
125	131	
150	155	



Female plug

UNI	Øi nut	Mat.
25	30,5	Brass
45	51,5	
70	79	
80	90	
100	109	
125	131	
150	155	



Male plug

UNI	Øe thread	Mat.
25	34	Brass
45	56	
70	85	
80	95	
100	115	
125	140	
150	165	



← - FIREFIGHTING UNI COUPLINGS -**Gasket**

UNI	Øe	Øi	Thk
25	34	22	2
45	56	41	3
70	85	65	4
80	95	75	4
100	115	93	5
125	140	118	5
150	165	142	6



DIN 11851 COUPLINGS

Welding male + nut

DIN	Mat.	Øe weld.	Øi nut	Øe nut
25	SS 316 / SS 304	44	48,2	63
32		50	54,2	70
40		56	61,2	78
50		68	74,2	92
65		86	91,2	112
80		100	104,3	127
100		121	124,3	148



Welding female

DIN	Øe thread	Mat.
25	52	SS 316 / SS 304
32	58	
40	65	
50	78	
65	95	
80	110	
100	130	



Threaded plug

DIN	Mat.
25	SS 316 / SS 304
32	
40	
50	
65	
80	
100	



Nut plug

DIN	Mat.
25	SS 316 / SS 304
32	
40	
50	
65	
80	
100	



← - DIN 11851 COUPLINGS -

Gasket

DIN	Mat.
25	PTFE
32	
40	
50	
65	
80	
100	



AIR EXPRESS COUPLINGS

Symmetrical half coupling male threaded

BSP	Int. Distance	Mat
3/8"	43	Cast Iron
1/2"		
3/4"		
1"		
1"1/4		
1"1/2		



Symmetrical half coupling female threaded

BSP	Int. Distance	Mat.
3/8"	43	Cast Iron
1/2"		
3/4"		
1"		
1"1/4		
1"1/2		



Hose liner

HOSE	Int. Distance	Mat.
13	43	Cast Iron
15		
20		
25		
30		
35		



NBR Gasket

Øi	Øe	Thk
20/23	34/29	11
All sizes		



WATER EXPRESS COUPLINGS

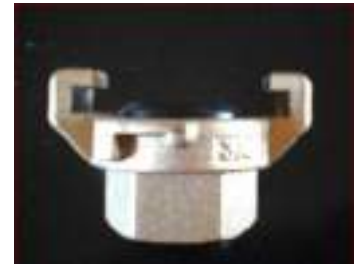
Symmetrical half coupling male threaded

BSP	Int. Distance	Mat.
3/8"	40	Carbon Steel
1/2"		
3/4"		
1"		
1"1/4		



Symmetrical half coupling female threaded

BSP	Int. Distance	Mat.
3/8"	40	Carbon Steel
1/2"		
3/4"		
1"		
1"1/4		



Hose liner

HOSE	Int. Distance	Mat.
13	40	Carbon Steel
15		
20		
25		
30		



NBR Gasket

Øi	Øe	Thk
21/23	33	9,5
All sizes		



DIN 2826 STEAM COUPLINGS

NPT threaded female

ND	Hose	Øi	Mat.
13	1/2"	18,6	Carbon Steel
19	3/4"	24,1	
25	1"	30,3	
32	1 " 1/4	38,9	
38	1" 1/2	44,9	
51	2	56,7	



NPT threaded male

ND	Hose	Øe thread	Mat.
13	1/2"	20,96	Carbon Steel
19	3/4"	26,44	
25	1"	33,25	
32	1 " 1/4	41,91	
38	1" 1/2	47,8	
51	2	59,61	



Safety clamps

ND	Øe hose	Mat.	
13	1/2"	24 / 27 mm	Carbon Steel
19	3/4"	30 / 33 mm	
25	1"	35,5 / 40 mm	
32	1 " 1/4	45,5 / 53 mm	
38	1" 1/2	51 / 56 mm	
51	2	63,5 / 70 mm	
63	2" 1/2	78 / 89 mm	
75	3"	89 / 95 mm	
100	4"	117,5 / 127 mm	



TRI CLAMP COUPLINGS

Clamp

ND	Ø	Mat.
1/2"	28,6	SS 316
3/4"	28,6	
1"	53,6	
1" 1/2	53,6	
2"	67	
2" 1/2	80,6	
3"	94	
4"	122	



Half coupling

ND	Øe	Mat.
1/2"	25,4	SS 316
3/4"	25,4	
1"	50,5	
1" 1/2	50,5	
2"	63,9	
2" 1/2	77,3	
3"	91	
4"	119	



Plug

ND	Øe	Thk	Mat.
1/2"	25,4	6,3	SS 316
3/4"	25,4		
1"	50,5		
1" 1/2	50,5		
2"	63,9		
2" 1/2	77,3		
3"	91	7,9	
4"	119		



Gasket

ND	Thk	Øi	Øe
1/2"	5	9,4	21,8
3/4"		15,8	
1"		22	50,4
1" 1/2		35	
2"		48	63
2" 1/2		60,5	76,5
3"		73	90
4"		97	118



GAROLLA COUPLINGS

Clamp

ND	Mat.
40	SS 304
50	
60	
70	
80	
100	
120	



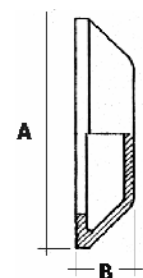
Half coupling

ND	Hose	Øe	Mat.
40	42	67	SS 304
50	50	77	
60	60	88	
70	70	98	
80	80	107	
100	100	130	
120	120	156	



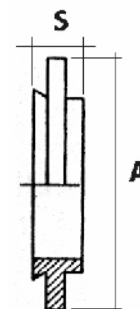
Plug

ND	Øe A	B	Mat.
40	67	18	SS 304
50	77		
60	88		
70	98		
80	108		
100	128		
120	158		



Gasket

ND	Mat.	S	A
40	Silicone	14	67
50			77
60			88
70			98
80			108
100			128
120		16	158



CLAMPING SYSTEMS

Screw clamps

Perforated band clamps, available in different band widths, suitable for light applications. They are supplied with separate screw to ease assembly on large diameters, starting 165 mm diameter.



Mini clamps

Mini clamps have small diameter ranges suggested for light applications. The band has bevelled edges.



Bronze clamps

Bolt clamps made of two halves. Suitable for heavy duty applications where a quick clamping, safe and easy to install system is required.



Fast clamp

A set composed of 25 mt continuous stainless steel band and separated housings. It's the solution to make a 14 mm band width clamp of every size, whenever needed. Provided with 25 housing boxes.



Band it®

The system is composed of band and buckles that can be used for fastening virtually any shape and diameter.

Recommended where superior strength is required. Available in Aisi 201 for standard applications or in Aisi 316 upon request.



Safety clamps

Aluminium clamping system with bolt closure. Sistema di serraggio in alluminio con chiusura a bullone. Available for a wide range of diameters, easy to be assemble and disassembled, to be used with couplings provided with safety anti-slip seaming.



DN	Hose Øi	Max Øe
1/2"	13	22 - 25
3/4"	19	30 - 33
1"	25	36 - 39
1 1/4"	32	43 - 46
1 3/8"	35	46 - 48
1 1/2"	38	50 - 53
1 3/4"	45	58 - 61
2"	50	63 - 67
2 1/2"	63/65	78 - 82
3"	75	88 - 93
	80	94 - 97
4"	100	114 - 119
5"	125	143 - 147
6"	150	167 - 173
8"	200	222 - 229



Monti & Barabino S.p.A.

16149 Genova Sampierdarena (GE) - Via Buranello 85/R

Tel: +39010413341 - Fax: +39010414281

Web site: www.montiebarabino.it - e-mail: info@montiebarabino.it

